

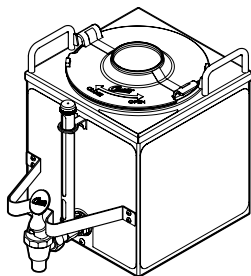


# Service Manual – Gemini IntelliFresh® Satellite

## Important Safeguards/Symbols

This appliance is designed for commercial use. Any servicing other than cleaning and preventive maintenance should be performed by an authorized Wilbur Curtis service technician.

- DO NOT immerse the unit in water or any other liquid.
- To reduce the risk of fire or electric shock, DO NOT open service panels. There are no user serviceable parts inside.
- Keep hands and other items away from hot surfaces of unit during operation.
- Never clean with scouring powders, bleach or harsh chemicals.



Model

- GEM31F
- GEM31F30

## Symbols



WARNINGS – To help avoid personal injury



Important Notes/Cautions – from the factory



Sanitation Requirements

## IntelliFresh Function and Features

The IntelliFresh system will alert you when the coffee has exceeded the desired holding time. The Intellifresh system is activated by a connector on the satellite coming into contact with a corresponding connector on the brewer. IntelliFresh is adjustable through the universal control module (UCM) on the brewer.

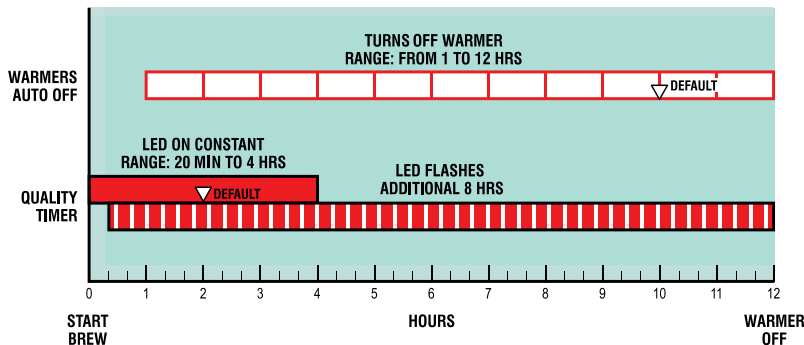
### Quality Timer (factory setting: 2 hours)

Press **⊙** to select, press **◀** or **▶** to choose the desired setting. The timer is intended to notify the user when the coffee loses its freshness. The LED indicator light on the satellite will remain solid red until the quality timer expires. At expiration, the LED will flash and continue flashing at the factory setting for an additional 8 hours. The additional 8 hours is controlled by the Warmer Auto-Off setting.

- Setting Range: 20 to 240 minutes.
- Time Expiration Indicator: The LED flashes after expiration of the quality timer setting for up to a total of 12 hours. The default time is 8 hours after expiration of the quality timer.

### Warmer Auto-Off (factory setting: 10 hours)

Press **⊙** to select, press **◀** or **▶** to adjust from 1 to 12 hours. This feature has higher priority than the quality timer. It shuts off the warmers after a pre-determined time, starting when the BREW button is pushed. The quality timer does not affect this function.



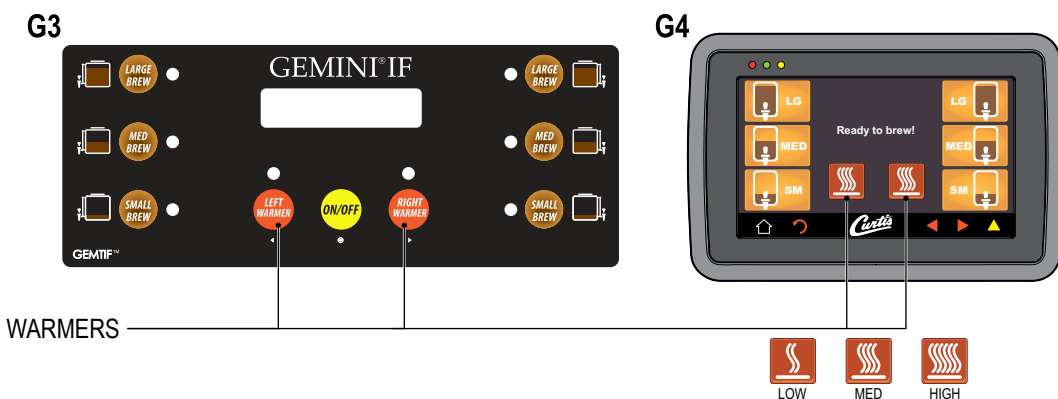
### Error Codes:

1. Three long blinks and one short blink = heater error.
2. Three long blinks and two short blinks = sensor error

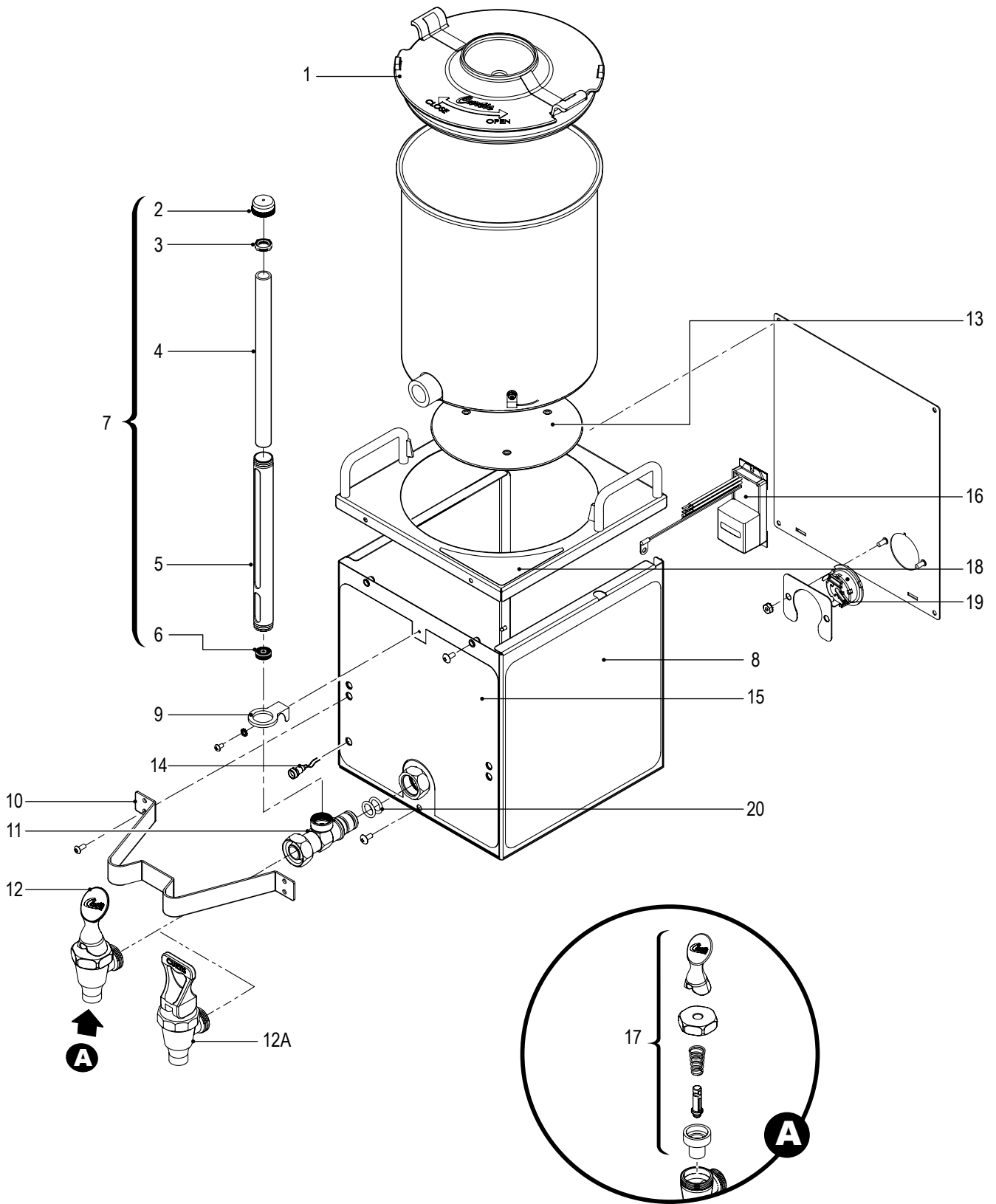
## Warmers

The warmers, will turn on automatically whenever a coffee brew cycle is started. The temperature of the warmers are controlled at the warmer buttons on the control panel.

The G3 UCM is shown on the left side and the G4 touch screen UCM is on the right.



# Illustrated Parts List - GEM3IF



## Illustrated Parts List - GEM3IF

Index №	Part №	Description
1 <sup>1</sup>	WC-5622	LID, SATELLITE PLASTIC GEM-3
2	WC-2001	CAP, SHIELD W/VENT 77-4 GEN USE
3 <sup>1</sup>	WC-2005	WASHER, SHIELD CAP 1/8" GEM-3/TC'S W/SG
4 <sup>1</sup>	WC-2025	GLASS, GAUGE 8"
5	WC-2010C	SHIELD, GAUGE GLASS 3/4"D.X 8"
6 <sup>1</sup>	WC-2006	WASHER, .188 ID X .188 THK BOTTOM GAUGE GLASS GEN USE
7	WC-2102	GAUGE GLASS, ASSY 8"C
8	WC-39747	LABEL, SIDE GEM-3IF CURTIS LOG
9	WC-2007	BRACKET, GAUGE GLASS GEM-3
10	WC-6417	GUARD, FAUCET GEM-3
11 <sup>2</sup>	WC-1901A-103K	KIT, SHANK ASSY, FAUCET W/ SHIELD BASE & O-RING
11A	WC-1901A	SHANK, FAUCET W/SHIELD BASE
12 <sup>1</sup>	WC-1800	FAUCET,"S" SERIES BLK LOCKING 1-1/32-14 UNS CURTIS
12A	WC-1800-CH	FAUCET, "S" SERIES NONLOCKING 1-1/32-14 UNS CLASSIC
13 <sup>1, 2</sup>	WC-981K	KIT, INTELLIFRESH HEATR WC-981 GEM3IF
13A <sup>2</sup>	WC-982K	KIT, INTELLIFRESH HEATR WC-982 GEM3IF30
14 <sup>1</sup>	WC-37544	KIT, LED SENSOR GEM3IF
15	WC-39746	LABEL, FRONT GEM3IF CURTIS LOGO
16 <sup>1</sup>	WC-736K	KIT, CONTROL MODULE, UPM 120V GEM3IF
16A	WC-739K	KIT, CONTROL MODULE, UPM 220V GEM3IF30
17 <sup>1</sup>	WC-3705	KIT, FAUCET S SERIES NONLOCK USE ON WC-1800
18	WC-38151	LABEL, LOCK/UNLOCK GEM-3
19	WC-13426	WIRE ASSY, IF CONNECTOR GEM3IF
20	WC-4320	O'RING, 1/2" I.D.

<sup>1</sup> SUGGESTED PARTS TO STOCK

<sup>2</sup> FOR UNITS BUILT AFTER 11/16/15

## Cleaning the GEM3IF Satellite

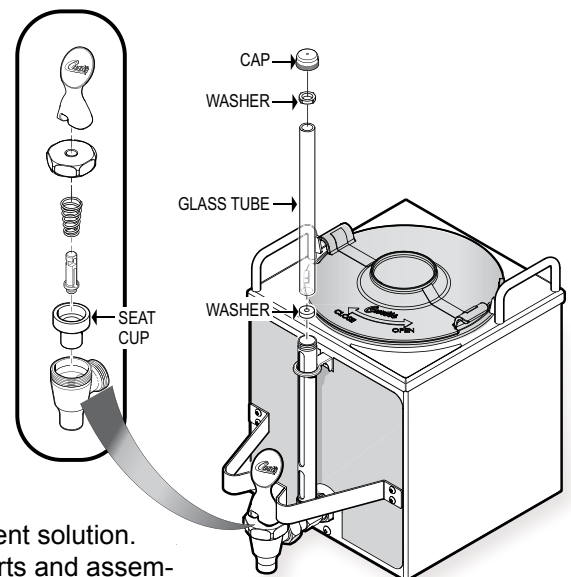
A daily routine of cleaning the GEM3IF satellite will maintain the appearance of the unit and ensure great tasting coffee. To clean the satellite components, prepare a mild solution of detergent and warm water.



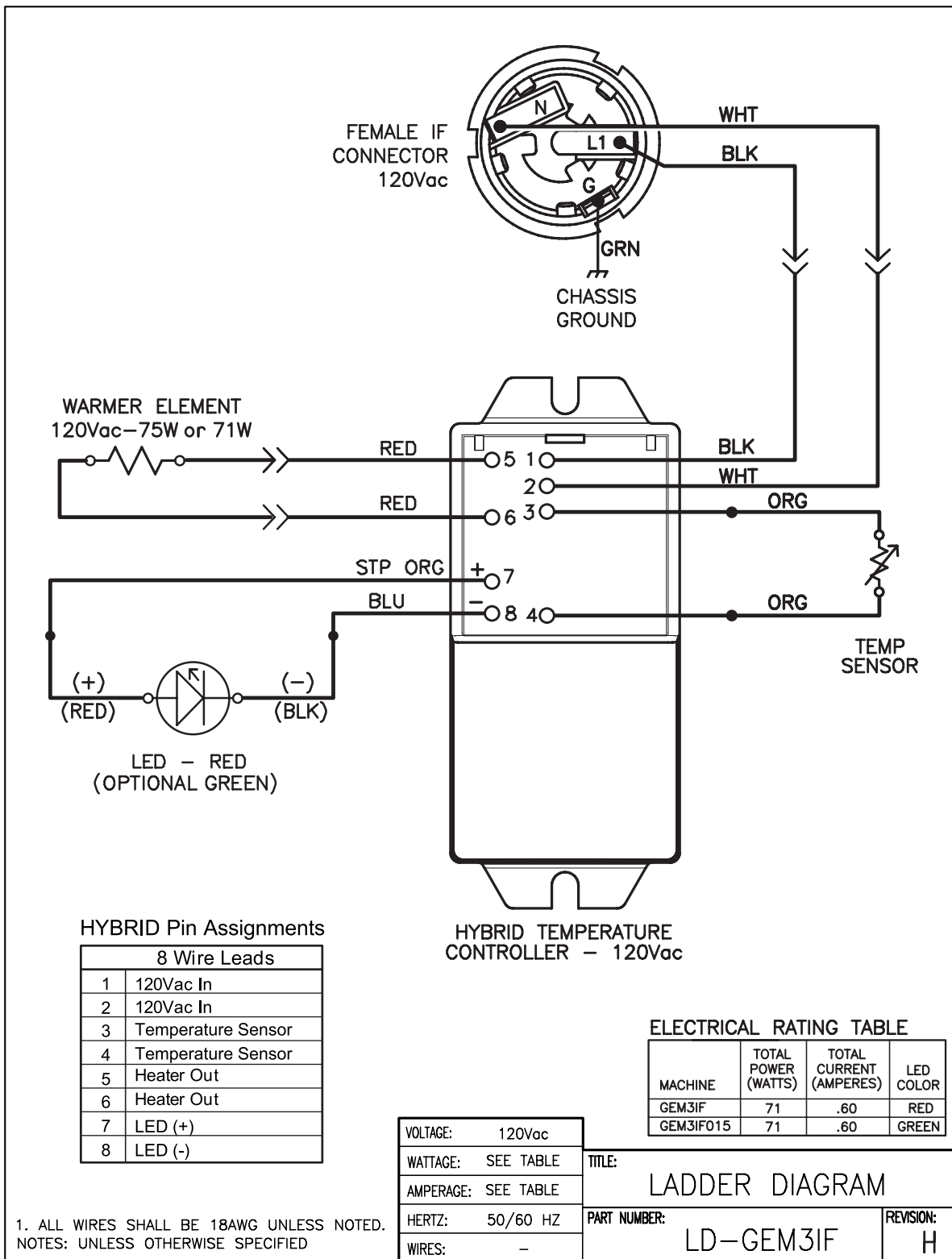
**CAUTION** – Do not use cleaning liquids, compounds or powders containing acids or corrosives. These products promote corrosion and will pit the stainless steel. USE OF THESE PRODUCTS WILL VOID THE WARRANTY.

### DO NOT immerse the satellite in water or any other liquid.

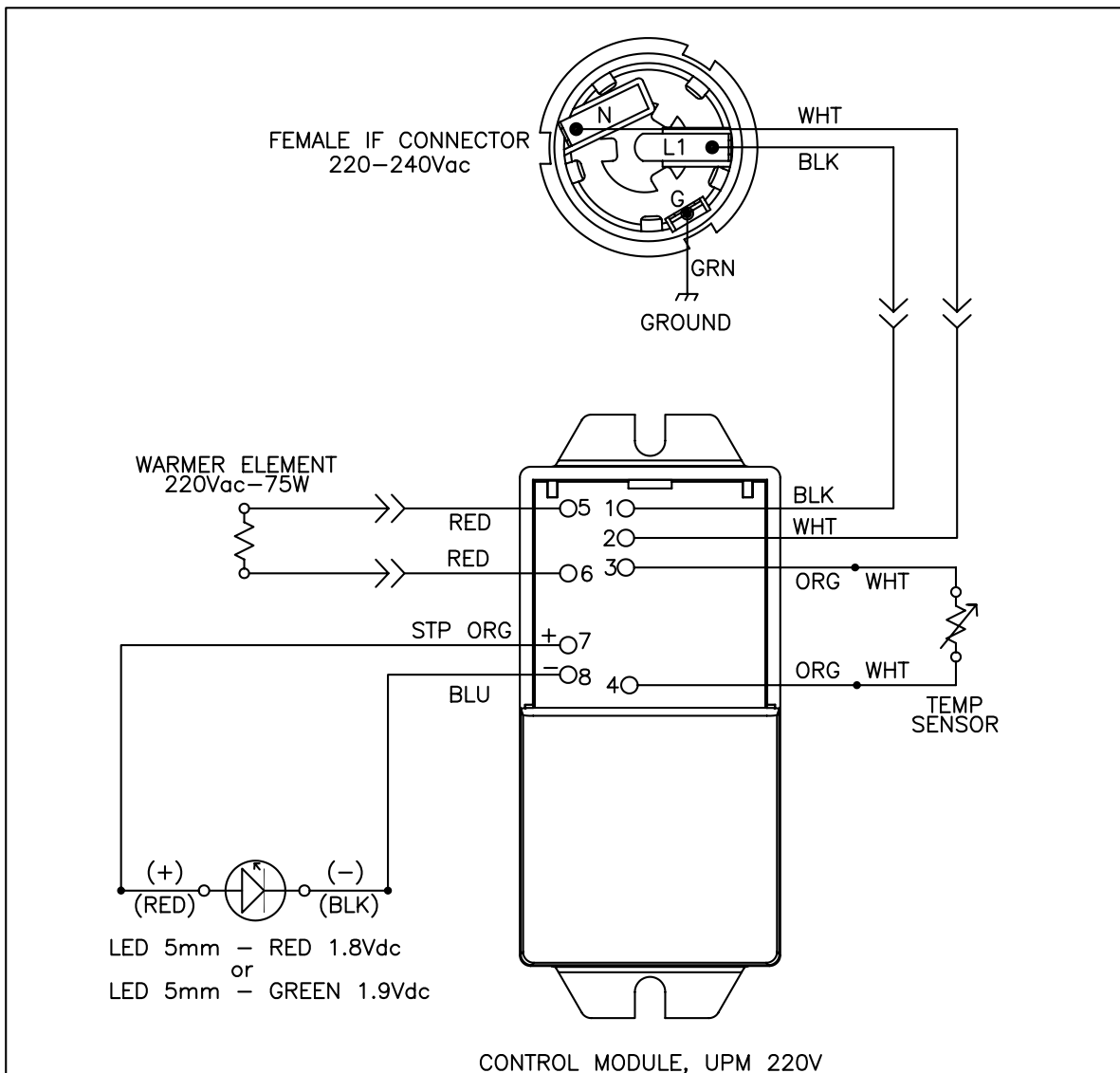
1. Remove the lid from the satellite. Clean the lid at the funnel area with a spiral brush and detergent solution.
2. Rinse the lid, removing all traces of cleaning solution.
3. Clean inside of the satellite. Remove coffee residue with the detergent solution.
4. Thoroughly rinse out the satellite with clean warm water.
5. Unscrew the handle/bonnet assembly and remove it from the dispensing faucet.
6. Inspect the silicone seat cup for wear, cracks or hardening. If okay, then leave the seat cup attached to the handle/bonnet assembly. Soak then wipe clean. Replace the seat cup if damaged.
7. Remove the gauge glass tube by unscrewing the gauge glass cap.
8. Clean the gauge glass tube with a gauge brush soaked with detergent solution. Soak and wipe the two washers. Rinse with clean water. Dry the parts and assemble them onto the satellite. Hand tighten the cap.
9. Clean all the parts. Thoroughly rinse with clean warm water.
10. Dry and re-assemble the parts. Hand-tighten when assembling them.



# Electrical Schematic - GEM3IF



# Electrical Schematic - GEM3IF30



ELECTRICAL RATING TABLE						
Model	Voltage V	Amps A	Watts W	Hertz Hz	# of Conductor Wires	Phase
GEM3IF30	220	0.34	75	50/60	2	1
	230	0.36	82	50/60	2	1
	240	0.37	89	50/60	2	1

2. USE THIS DIAGRAM FOR ALL OTHER MODELS WITH ADDED PREFIX LETTERS AND/OR SUFFIX NUMBERS ON THEIR PART NUMBERS HAVING THE SAME ELECTRICAL RATINGS.

1. ALL WIRES SHALL BE MIN 18AWG PVC/UL1015 UNLESS NOTED.

NOTES: UNLESS OTHERWISE SPECIFIED

VOLTAGE:	SEE TABLE	TITLE: <b>LADDER DIAGRAM</b>
WATTAGE:	SEE TABLE	
AMPERAGE:	SEE TABLE	
HERTZ:	50/60 HZ	
WIRES:	-	PART NUMBER: <b>LD-GEM3IF-30</b>
		REVISION: <b>NC</b>

This page intentionally blank

This page intentionally blank



**WILBUR CURTIS CO., INC.**

6913 Acco St., Montebello, CA 90640-5403 USA | Phone: 800-421-6150 | Fax: 323-837-2410

Technical Support Phone: 800-995-0417 (M-F 5:30 A.M. - 4:00 P.M. PST)

Email: [techsupport@wilburcurtis.com](mailto:techsupport@wilburcurtis.com) | [www.wilburcurtis.com](http://www.wilburcurtis.com)